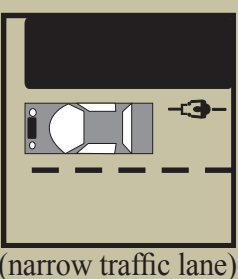


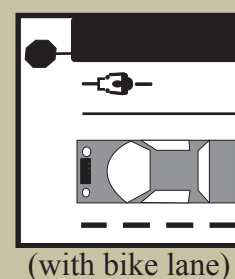
# Bicycle Safety Information

## Obey Traffic Signs, Signals and Laws

Bicyclists must obey all the rules that apply to the driver of a motor vehicle if they are to be taken seriously by motorists.



(narrow traffic lane)



(with bike lane)

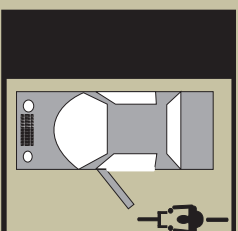
## Obey Applicable Lane Rules

Ride with traffic flow and as far right as practical. Use bike lane if available. Ride to right-most portion of road when wide enough to share with cars. When lane is too narrow to share easily, ride further out in traffic lane.



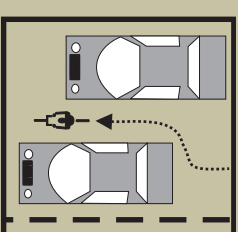
## Use Lights at Night

The law requires a white headlight (visible for at least 500 feet ahead), and rear reflector or taillight (visible at least 600 feet from behind). Nearly 60 percent of all fatal bicycle accidents occur during twilight and night hours.



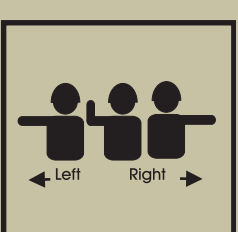
## Watch for Opening Car Doors

Whenever possible, ride about a car door's width away from parked cars.



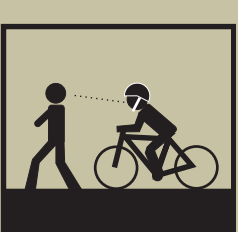
## Never Weave Between Cars

Ride in a straight line and avoid weaving between parked cars. Motorists may not see you when you re-enter traffic flow.



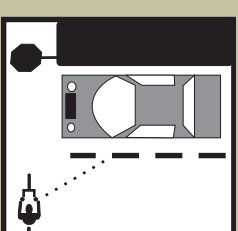
## Use Hand Signals

Hand signals tell motorists and pedestrians what you intend to do. Signal as a matter of law, of courtesy and of self-protection.



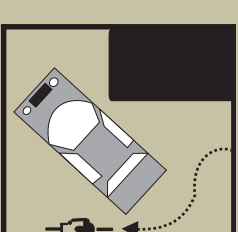
## Ride Slowly on Sidewalks

On sidewalks, pedestrians have the right-of-way. You must give them an audible warning when you pass (voice, bell, or horn). Do not cross driveways or intersections without looking carefully for traffic. Yield to traffic when entering roadways.



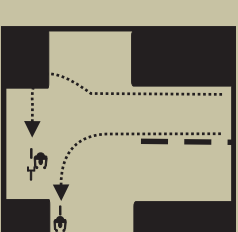
## Scan the Road Around You

Watch constantly for cars, people, debris, grates, etc. Make eye contact with drivers. Assume they don't see you until they stop. Learn to look over your shoulder without losing your balance or swerving left. Some bicyclists use rearview mirrors.



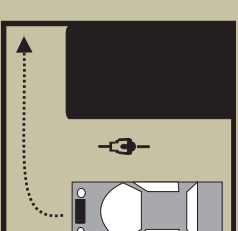
## Follow Lane Markings

Do not turn left from the right lane. Do not go straight in a lane marked right-turn only.



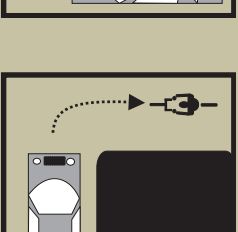
## Choose the Best Way To Turn Left

There are two ways to make a left turn: 1. As in driving, move into the left lane and turn left. 2. Like a pedestrian, ride straight to the far side crosswalk, and walk your bike across. Always use hand signals.



## Do Not Pass on the Right

Do not overtake an automobile when approaching an intersection or when the automobile has a turn signal flashing.



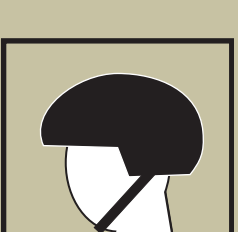
## Never Ride Against Traffic

Motorists do not look for bicyclists riding on the wrong side of the road. In Florida the bicycle is legally defined as a vehicle. Bicyclists must obey the same traffic laws as operators of other vehicles. This rule does not apply when riding on sidewalks.



## Observe Skill Level of Off-Road Trails

Off-road trail systems vary in levels of difficulty. Choose a trail system fit for your personal skill level. Park brochures are usually available on the trail network. To prevent injury, always wear a helmet while riding off-road.



## Always Wear a Helmet

Nearly 75 percent of all bicycle-related deaths result from head injuries. Wearing a helmet is optional for persons 16 years or older, but Florida law requires a bicycle rider or passenger under 16 to wear a bicycle helmet meeting specific safety standards.

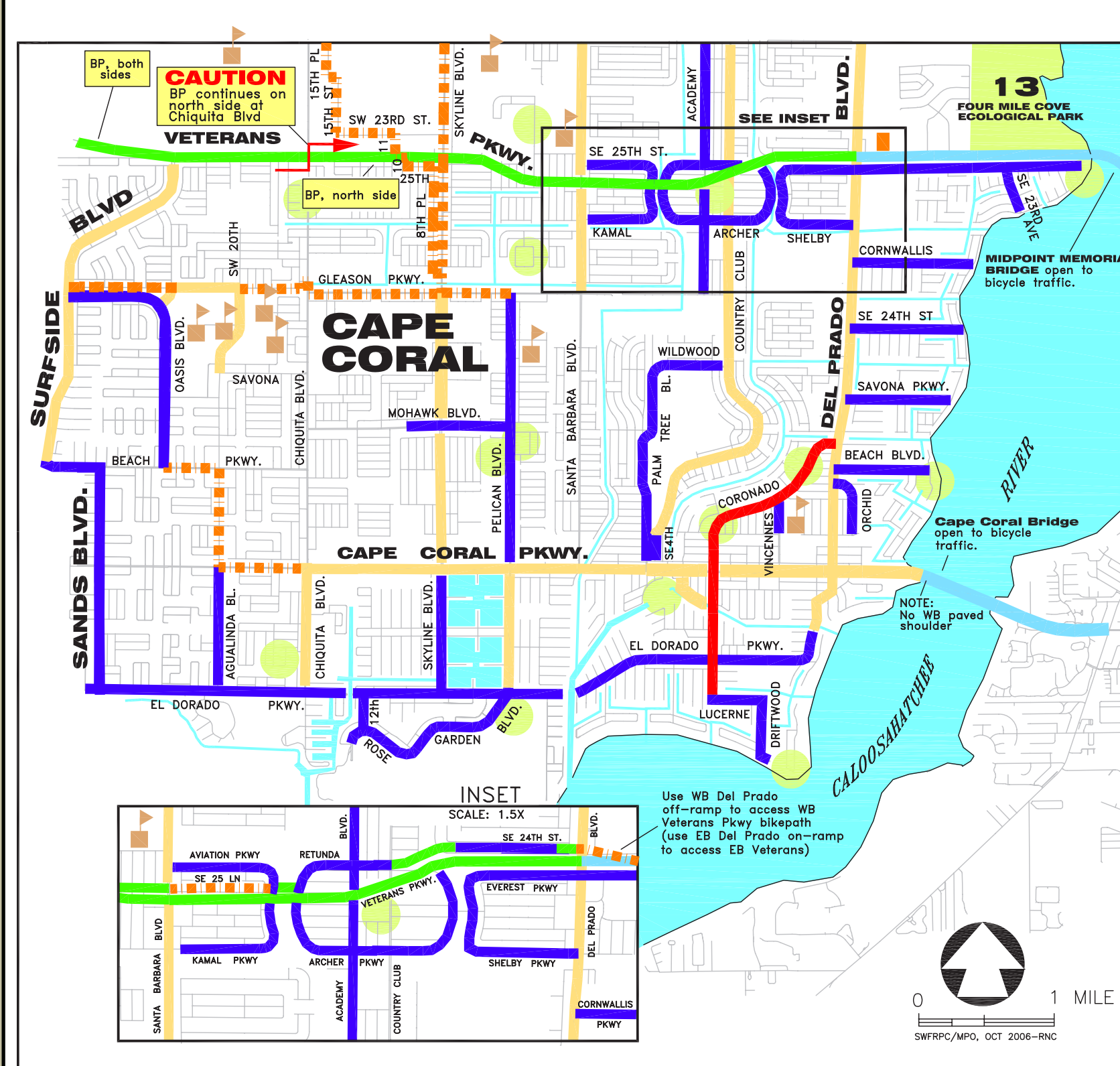
## Remember, Most Bicycle Crashes Are Caused By

1. Running stop signs and red lights.
2. Riding at night without lights.
3. Riding on the wrong side of the road.

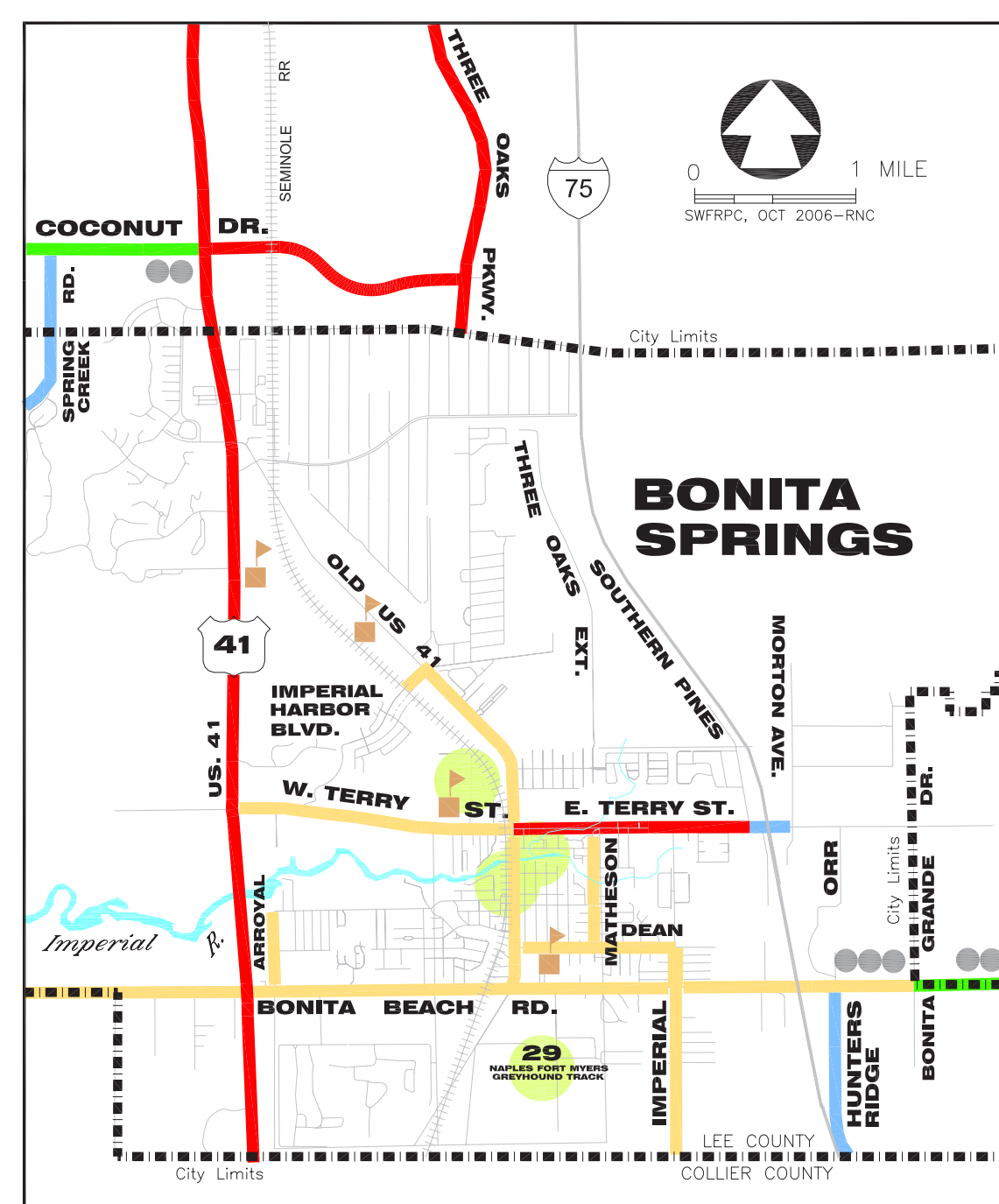
## Fort Myers



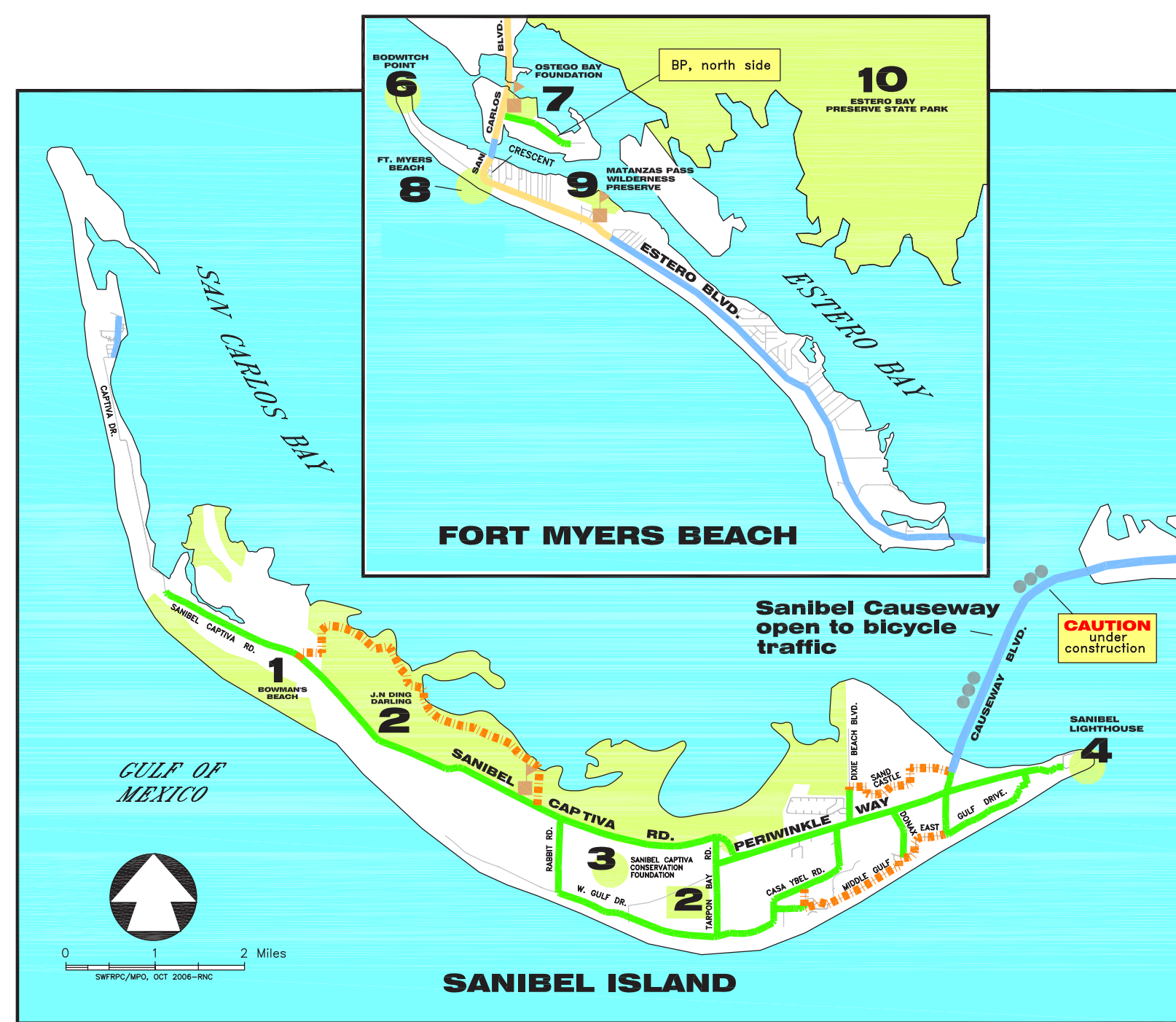
## Cape Coral



## Bonita Springs



## Town of Fort Myers Beach and Sanibel



## Legend

- BIKE LANE
- BIKE PATH
- BIKE TRAIL
- PAVED SHOULDER
- SIDE WALK
- DUAL FACILITIES
- BIKE ROUTE
- RAILROAD
- + HOSPITAL
- + PUBLIC SCHOOL
- + BIKE FACILITY TRANSITIONS TO OTHER SIDE OF ROAD
- + FACILITY UNDER DESIGN OR CONSTRUCTION
- COMMUNITY PARK
- REGIONAL PARK CONSERVATION AREA

## Notes

1. Sidewalks 8 feet or wider are shown as bike paths on this map.
2. Bike routes may or may not have existing facilities.
3. Sidewalks are shown in this map, only where there are no other bicycle facilities for continuity.
4. Bike Path is an off-road paved facility within the right-of-way of an existing road and runs parallel to it.
5. Bike Trail is an off-road paved facility with its own right-of-way and does not necessarily run parallel to an existing road.
6. Paved shoulders shown on this map are at least 3 feet wide.
7. "Dual Facilities" means there is more than one treatment available, for example: Sidewalk & Paved Shoulder; or Bike Path & Paved Shoulder.
8. For information on the "Bike Routes" go to: <http://www.caloosariders.com>
9. For more information on Parks and Greenways, go to: <http://www.leeparks.org/greenways/greenways.cfm>
10. Lee County Transit is nationally recognized for having 100% of its buses equipped with bike racks. For more information on Lee Tran's routes and bike information, go to: <http://www.rideletran.com> (follow the links from "How to ride" to "How to Ride Lee Tran with your bicycle.")
11. This 2<sup>nd</sup> edition map is posted on the Lee County MPO's website at <http://www.mpo-swfl.org/> -- and will be updated from time to time. If you want to obtain more paper copies of the Map, or need to report 'trouble spots' with the Map, please contact the MPO.
12. To report 'road hazards,' or other issues as you are out-and-about, please contact:
  - Lee County DOT - 239-479-8580 or go to <http://www.lee-county.com>
  - City of Cape Coral - 239-573-3160 or go to <http://www.capecoral.net>
  - Lee County office of the Florida Department of Health - 239-332-9514 or go to <http://www.lee-county.com/healthdept/>
  - City of Bonita Springs Public Works Department - 239-949-6262 or go to <http://www.cityofbonitasprings.org>
  - City of Fort Myers Recreation Department - 239-338-2287 or go to <http://www.cityofmyers.com>
  - LeeTran - 239-275-TRAN or go to <http://www.rideletran.com>
  - City of Sanibel Public Works Department - 239-472-6397 or go to <http://www.ci.sanibel.fl.us>
  - Town of Fort Myers Beach Administration - 239-765-0202 or go to <http://www.fmbeach.org>
  - Florida Department of Transportation, Southwest Area Office - 239-461-4300 or go to <http://www.dot.state.fl.us>

## Sponsors

3630 Cleveland Ave.  
Fort Myers, FL 33901  
[www.schwinncyclery.com](http://www.schwinncyclery.com)

14530 US 41 S  
Fort Myers, FL 33912  
[www.thebikeroute.com](http://www.thebikeroute.com)

P.O. Box 870  
Fort Myers, FL 33901  
[www.caloosariders.com](http://www.caloosariders.com)

[www.leeparks.org](http://www.leeparks.org)

[www.sanibel-captiva.org](http://www.sanibel-captiva.org)

# Florida's Bicycle Safety Laws

## LEGAL STATUS—BICYCLES ARE VEHICLES

In Florida, the bicycle is legally defined as a vehicle. Bicyclists have the same rights to the roadways and must obey the same traffic laws as the operators of other vehicles. These laws include stopping for stop signs and red lights, riding with the flow of traffic, using lights at night, and yielding the right-of-way when entering a roadway.

With few exceptions, there is only one road and it is up to bicyclists and motorists to treat each other with care and respect. Strict adherence to the law is the foundation for this respect.

## TRAFFIC LAW HIGHLIGHTS

### Bicycle Regulations (see Section 316.2065, F.S.)

- A bicyclist must obey all traffic controls and signals.
- A bicyclist must use a fixed, regular seat for riding.
- No bicycle may be used to carry more persons at one time than the number for which it is designed or equipped, except that an adult rider may carry a child securely attached to his or her person in a backpack or sling. Except when a child is in a backpack or sling, a bicyclist rider must carry any passenger who is a child under 4 years of age, or who weighs 40 pounds or less, in a seat or carrier that is designed to carry a child of that age or size and that secures and protects the child from the moving parts of the bicycle. A bicycle rider may not allow a passenger to remain in a child seat or carrier on a bicycle when the rider is not in immediate control of the bicycle.
- A bicycle rider or passenger who is under 16 years of age must wear a bicycle helmet fastened securely to the head. The helmet must meet the standards of the American National Standards Institute (290.4) or Snell Memorial Foundation (1984) or Consumer Product Safety Commission (1997).
- At least one hand must be kept on the handlebars while riding.
- Parents and guardians must not knowingly allow a child or minor ward to violate any provision of this section.
- Every bicycle must be equipped with a brake or brakes which allow the rider to stop within 25 feet from a speed of 10 miles per hour on dry, level, clean pavement.

### Sidewalk Riding (see Section 316.2065, F.S.)

- When riding on sidewalks or in crosswalks, a bicyclist has the same rights and duties as a pedestrian.
- A bicyclist riding on sidewalks or in crosswalks must yield the right-of-way to pedestrians and must give an audible signal before passing.
- Some local governments prohibit sidewalk riding. Local law enforcement agencies can provide copies of local ordinances.

### Lighting (see Section 316.2065, F.S.)

- A bicycle operated between sunset and sunrise must be equipped with a lamp on the front exhibiting a white light visible from 500 feet to the front and both a red reflector and a lamp on the rear exhibiting a red light visible from 600 feet to the rear.
- Additional lighting is permitted and recommended.

### Roadway Position (see Section 316.2065, F.S.)

- A bicyclist who is not traveling at the same speed of other traffic must ride as close as practicable to the right hand curb or edge of the roadway. A bicyclist may leave the right-most portion of the road in the following situations: when passing, making a left turn, to avoid hazards, or when a lane is too narrow for a bicycle and a car to share safely.
- A bicyclist operating on a one-way street with two or more traffic lanes may ride as close to the left hand edge of the roadway as practicable.
- Riding in single file is required except on bike paths or parts of roadways set aside for the exclusive use of bicycles, or when two people riding side-by-side within one lane will not impede traffic flow.

### Left Turns (see Section 316.151[1][b] and [c], F.S.)

- A bicyclist intending to make a vehicle left turn is entitled to full use of the lane from which the turn is made. After scanning, signaling, and moving to the center of that lane, the bicyclist must check the signal and then proceed when it is green and safe to do so.
- In addition to the normal vehicle left turn, a bicyclist may proceed through the right-most portion of the intersection and turn as close to the curb or edge as possible at the far side. After complying with any official traffic control device, the bicyclist may proceed in the new direction of travel.
- Another option available to a bicyclist is to dismount and walk through the intersection in the crosswalk like a pedestrian.

### Signaling Turns (see Section 316.155[2] and 316.157[2], F.S.)

- A signal of intention to turn must be given during the last 100 feet traveled by the vehicle before turning. If a bicyclist needs both hands for control, the signal need not be given continuously.
- A bicyclist may signal intent to turn right either by extending the left hand and arm upward or by extending the right hand and arm horizontally to the right side of the bicycle.

### Headsets (see Section 316.304, F.S.)

- A bicyclist must not wear a headset, headphone or other listening device other than a hearing aid when riding. Wearing a headset blocks out important audio cues needed to detect the presence of other traffic.

### Civil Penalties (see Section 318.18[1], [2] and [3], F.S.)

- Civil penalties may be issued for violations of bicycle laws as well as for moving and non-moving violations.

### Limited Access Facilities and Interstate Highways (see Section 316.091, F.S.)

- Bicycles shall not operate upon a limited access facility or interstate highway.

### Local Ordinances

- Local governments can adopt ordinances regulating bicycle riding. Some local governments may also have registration and licensing ordinances. Sidewalk riding may be prohibited entirely or only in certain areas such as business districts. Local law enforcement agencies can provide copies of local ordinances.